




Department of Transportation
Two Capitol Hill
Providence, RI 02903

Office 401-222-2450
Fax 401-222-3905

MEMO:

To: James R. Primeau, P.E., PMP
Managing Engineer, Project Management-Office of Scoping and Compliance

From: Lilliam Abreu 
Chief Program Development/ Title VI Coordinator / Office of Civil Rights

Subject: Title VI Environmental Justice Analysis
PTS No. 00481- Bridge Group 95- Rt 4 & 95 "Missing Move"
RIC No.
FAP No.

Date: 1/26/2021

I reviewed the completed Title VI/Environmental Justice Analysis for the above referenced project and assessed, based upon the information submitted and supporting documentation, that:

- Yes** **No** Significant EJ populations (low-income, minority, age 64 +, individuals with disabilities, and Limited English Proficiency (LEP)) exist within the project area (0.5 miles radius).
- Yes** **No** Disproportionally high and adverse social, economic, and environmental impacts is expected from this project.
- Yes** **No** Temporary EJ impact is expected during construction of this project.

Comments/Recommendations:

Should you have any questions, please contact me at x4256

Attachment

EJ Evaluation map

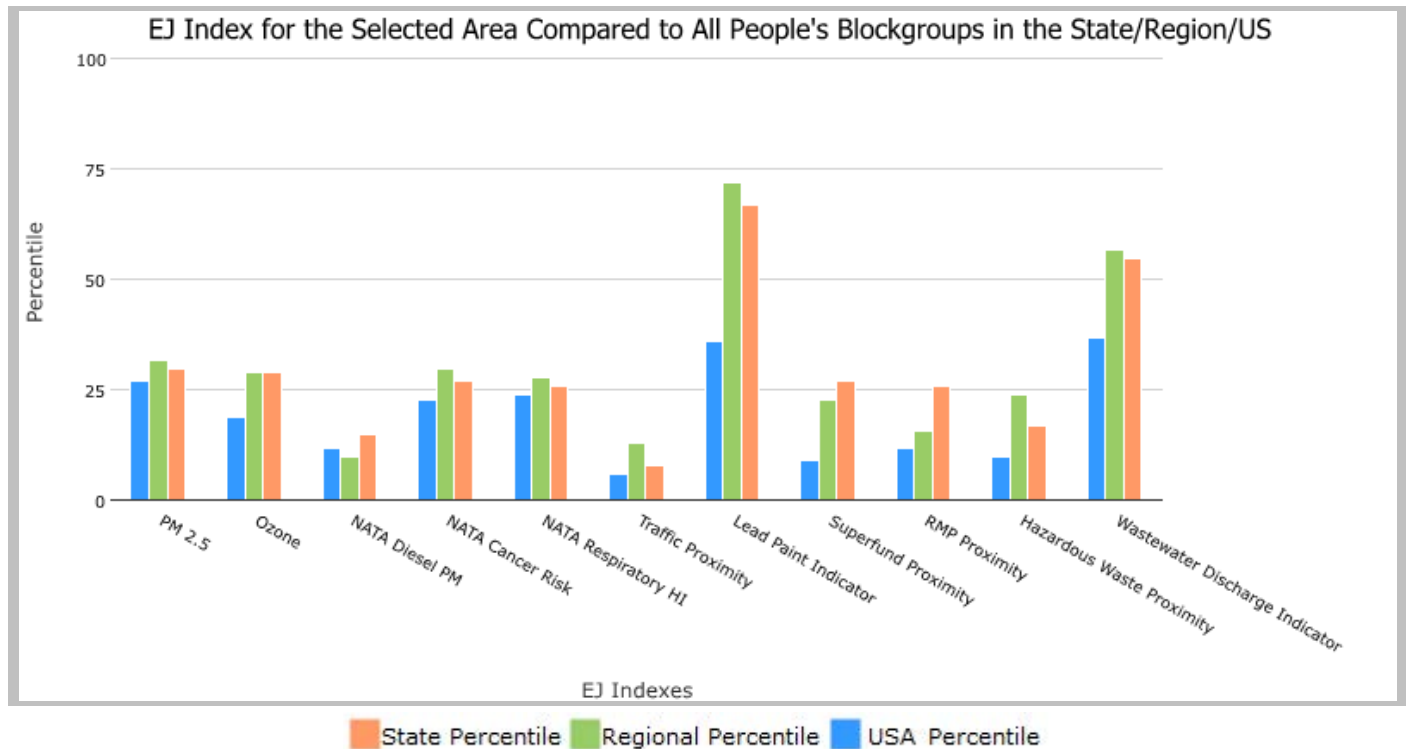
.5 miles Ring around the Area, RHODE ISLAND, EPA Region 1

Approximate Population: 1,821

Input Area (sq. miles): 2.55

I-95 and Route 4 Interchange

Selected Variables	State Percentile	EPA Region Percentile	USA Percentile
EJ Indexes			
EJ Index for PM2.5	30	32	27
EJ Index for Ozone	29	29	19
EJ Index for NATA* Diesel PM	15	10	12
EJ Index for NATA* Air Toxics Cancer Risk	27	30	23
EJ Index for NATA* Respiratory Hazard Index	26	28	24
EJ Index for Traffic Proximity and Volume	8	13	6
EJ Index for Lead Paint Indicator	67	72	36
EJ Index for Superfund Proximity	27	23	9
EJ Index for RMP Proximity	26	16	12
EJ Index for Hazardous Waste Proximity	17	24	10
EJ Index for Wastewater Discharge Indicator	55	57	37



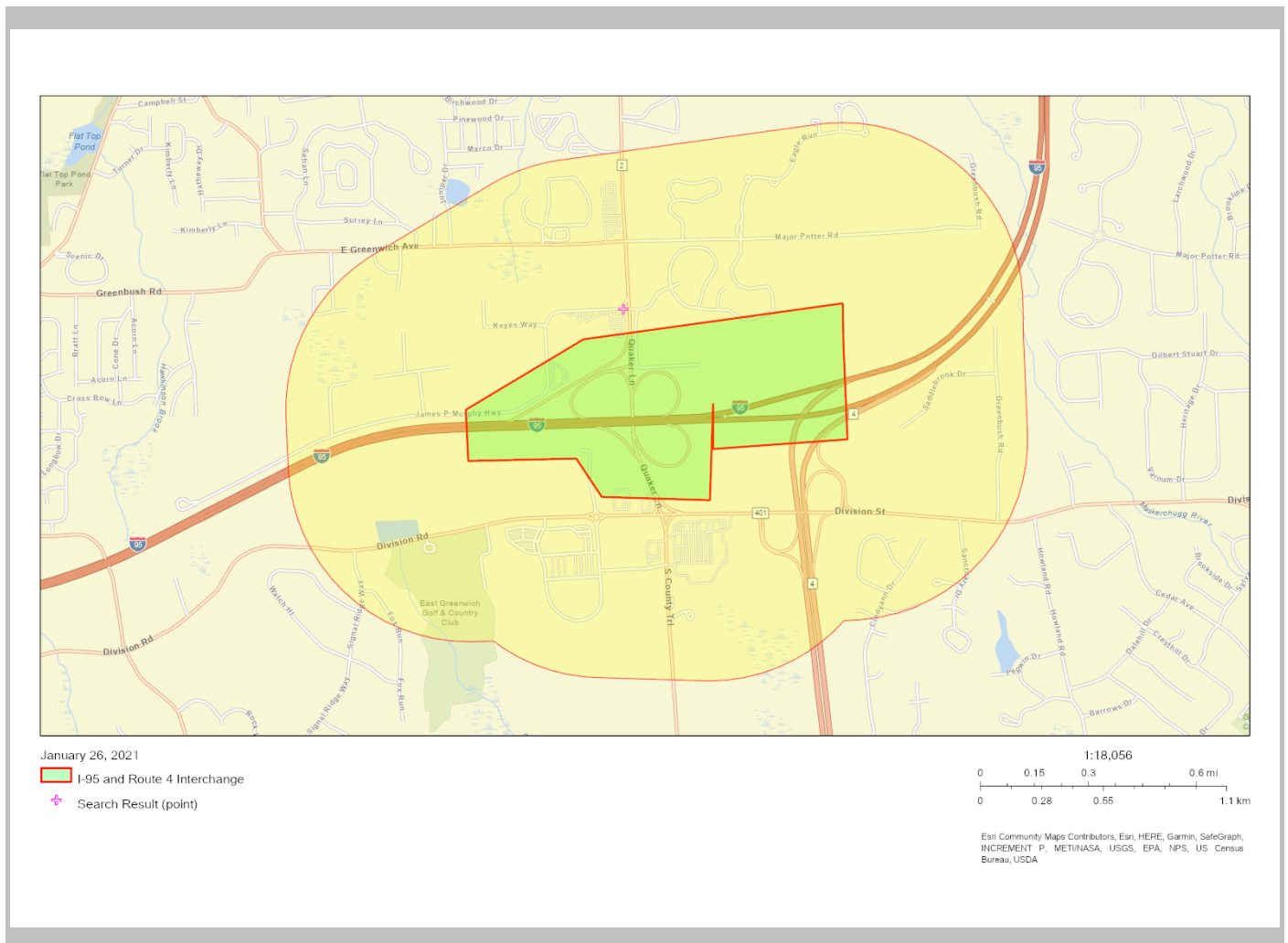
This report shows the values for environmental and demographic indicators and EJSCREEN indexes. It shows environmental and demographic raw data (e.g., the estimated concentration of ozone in the air), and also shows what percentile each raw data value represents. These percentiles provide perspective on how the selected block group or buffer area compares to the entire state, EPA region, or nation. For example, if a given location is at the 95th percentile nationwide, this means that only 5 percent of the US population has a higher block group value than the average person in the location being analyzed. The years for which the data are available, and the methods used, vary across these indicators. Important caveats and uncertainties apply to this screening-level information, so it is essential to understand the limitations on appropriate interpretations and applications of these indicators. Please see EJSCREEN documentation for discussion of these issues before using reports.

.5 miles Ring around the Area, RHODE ISLAND, EPA Region 1

Approximate Population: 1,821

Input Area (sq. miles): 2.55

I-95 and Route 4 Interchange



Sites reporting to EPA	
Superfund NPL	0
Hazardous Waste Treatment, Storage, and Disposal Facilities (TSDF)	0

EJSCREEN Report (Version 2020)



.5 miles Ring around the Area, RHODE ISLAND, EPA Region 1

Approximate Population: 1,821

Input Area (sq. miles): 2.55

I-95 and Route 4 Interchange

Selected Variables	Value	State Avg.	%ile in State	EPA Region Avg.	%ile in EPA Region	USA Avg.	%ile in USA
Environmental Indicators							
Particulate Matter (PM 2.5 in $\mu\text{g}/\text{m}^3$)	5.93	6.17	26	6.14	37	8.55	3
Ozone (ppb)	40.8	41	18	39.5	64	42.9	34
NATA* Diesel PM ($\mu\text{g}/\text{m}^3$)	0.488	0.503	58	0.345	80-90th	0.478	60-70th
NATA* Cancer Risk (lifetime risk per million)	24	25	42	25	<50th	32	<50th
NATA* Respiratory Hazard Index	0.31	0.32	44	0.31	50-60th	0.44	<50th
Traffic Proximity and Volume (daily traffic count/distance to road)	630	850	63	930	66	750	73
Lead Paint Indicator (% Pre-1960 Housing)	0.048	0.51	1	0.44	2	0.28	27
Superfund Proximity (site count/km distance)	0.13	0.21	48	0.15	71	0.13	75
RMP Proximity (facility count/km distance)	0.49	1	41	0.58	65	0.74	59
Hazardous Waste Proximity (facility count/km distance)	1.8	3.5	44	4.1	47	5	63
Wastewater Discharge Indicator (toxicity-weighted concentration/m distance)	9.6E-08	7.6	13	0.7	19	9.4	33
Demographic Indicators							
Demographic Index	14%	28%	35	24%	38	36%	16
People of Color Population	18%	27%	55	24%	57	39%	34
Low Income Population	9%	28%	16	24%	22	33%	12
Linguistically Isolated Population	2%	6%	56	5%	59	4%	59
Population With Less Than High School Education	2%	12%	11	9%	17	13%	12
Population Under 5 years of age	4%	5%	38	5%	35	6%	26
Population over 64 years of age	28%	16%	89	17%	91	15%	92

* The National-Scale Air Toxics Assessment (NATA) is EPA's ongoing, comprehensive evaluation of air toxics in the United States. EPA developed the NATA to prioritize air toxics, emission sources, and locations of interest for further study. It is important to remember that NATA provides broad estimates of health risks over geographic areas of the country, not definitive risks to specific individuals or locations. More information on the NATA analysis can be found at: <https://www.epa.gov/national-air-toxics-assessment>.

For additional information, see: www.epa.gov/environmentaljustice

EJSCREEN is a screening tool for pre-decisional use only. It can help identify areas that may warrant additional consideration, analysis, or outreach. It does not provide a basis for decision-making, but it may help identify potential areas of EJ concern. Users should keep in mind that screening tools are subject to substantial uncertainty in their demographic and environmental data, particularly when looking at small geographic areas. Important caveats and uncertainties apply to this screening-level information, so it is essential to understand the limitations on appropriate interpretations and applications of these indicators. Please see EJSCREEN documentation for discussion of these issues before using reports. This screening tool does not provide data on every environmental impact and demographic factor that may be relevant to a particular location. EJSCREEN outputs should be supplemented with additional information and local knowledge before taking any action to address potential EJ concerns.



Department of Transportation
Division of Project Management
Office of Scoping & Compliance
Two Capitol Hill
Providence, RI 02903

Office (401) 563-4000
Fax (401) 222-6168

MEMO:

TO: Lilliam Abreu
Chief Program Development, Office of Civil Rights

FROM: James R. Primeau, P.E., PMP *JRP*
Managing Engineer, Project Management – Office of Scoping & Compliance

SUBJECT: PTS ID: 0048I – Bridge Group 95 – Rt 4 & 95 “Missing Move”
Title VI Environmental Justice Analysis

DATE: January 19, 2021

Attached for your review with Title VI Environmental Justice is the Title VI Report summarizing the demographic data for the “Missing Move” component of the project. A subsequent Title VI memo will be sent for the Rt 403 Deferred Ramps portion of the project.

Should you have any questions or require additional Information please contact me at Extension 4318 or the Project Manager, Jay McGinn at Extension 4184.

Attachment

cc: L. Fiset, D. Walsh, J. McGinn, D. Paiva, N. Rodriguez; File

Categorical Exclusion (CE) Determination Title VI Memo

On-Call Scoping/Preliminary Bridge, Pavement and Traffic Engineering Design Program-Contract 2
PTS No. 0048I

I-95 and Route 4 Interchange

Warwick, West Warwick, East Greenwich

January 18, 2021

Project Description:

The project focus is the Interstate Route 95 and Rhode Island Route 4 Interchange, which is located in both the city of Warwick and the town of East Greenwich in the state of Rhode Island. The interchange is generally located at mile marker 24.6 on Interstate Route 95 (I-95). The interchange is located in the central portion of Rhode Island and serves as a major link for commuters, industries, and tourists between southern Rhode Island, Connecticut, and New York to the south; and the city of Providence and Massachusetts to the north.

The study area for the project, shown in figure 1 presented in Appendix A, encompasses the I-95 Interchange at Route 4 and also includes the I-95 Interchange at Route 2 (Quaker Lane), the I-95 Interchange at Route 117 (Centerville Road) and the Route 4 Interchange at Route 401 (Division Street).

The project’s proposed action is to construct two new interchange ramps that will provide direct links for access from Interstate Route 95 northbound to Route 4 southbound and from Route 4 northbound to Interstate Route 95 southbound.

Environmental Justice:

Executive Order 12898

Executive Order 12898 directs federal agencies to identify and address the disproportionately high and adverse human health or environmental effects of their actions on minority and low-income populations, to the greatest extent practicable and permitted by law; develop a strategy for implementing environmental justice; and promote nondiscrimination in federal programs that affect human health and the environment, as well as provide minority and low-income communities access to public information and public participation.

The EPA's Environmental Justice Screening and Mapping Tool (Version 2019) was used to determine the minority population and poverty rates for the project area in comparison with the rates for the State of Rhode Island. The following table summarizes the results:

0.5 miles Ring around the Area, RI, EPA Region 1 (Population: 2,873)	Project	State Avg.	%ile in State	USA Avg.	%ile in USA
Minority Population	17%	27%	55	39%	33
Low Income Population	9%	29%	13	33%	12
Linguistically Isolated Population	1%	6%	46	4%	49

Source: EPA's Environmental Justice Screening and Mapping Tool

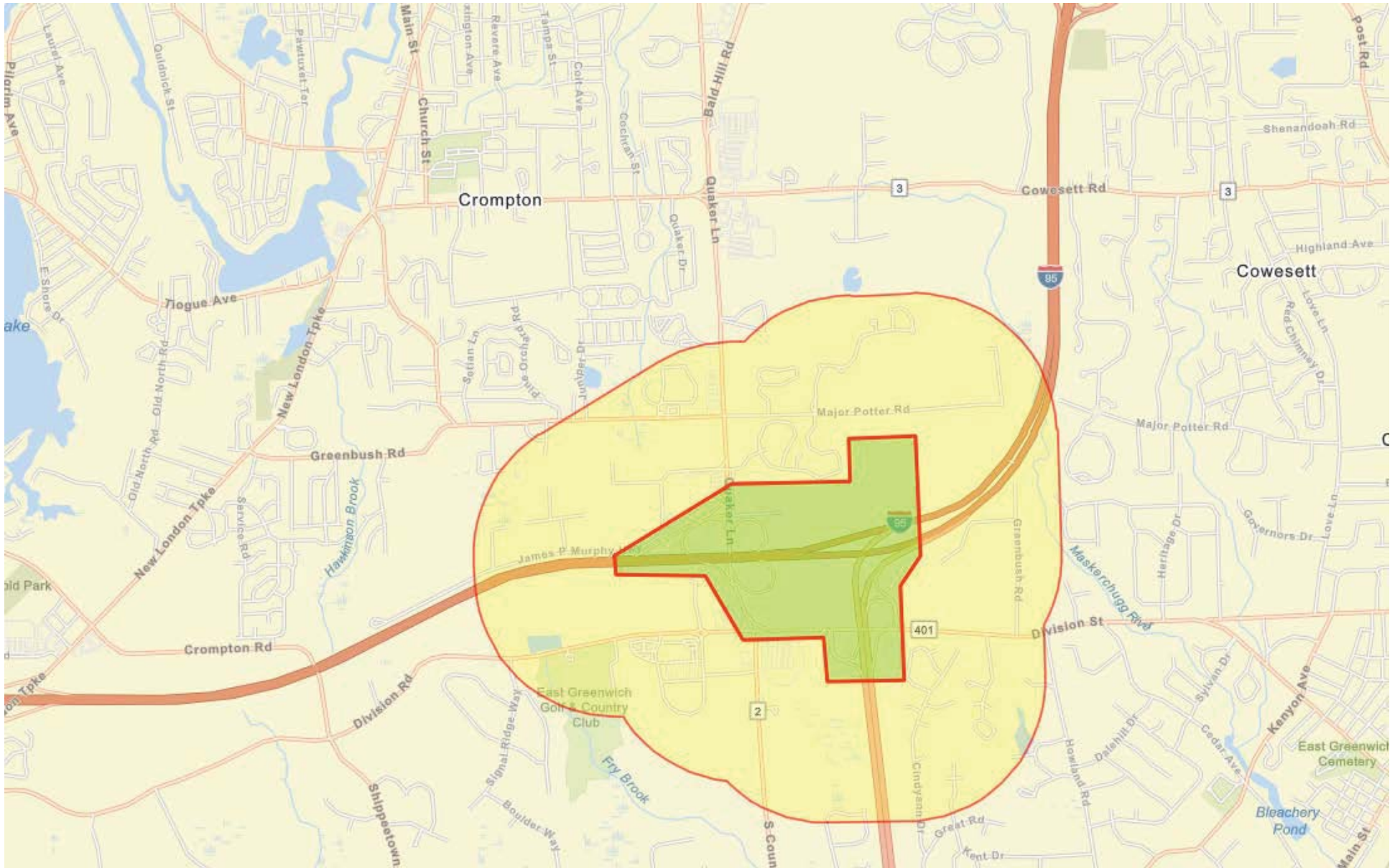
- Impacts to Environmental Justice Populations

The Project overall is not considered to have a disproportionately high and adverse effect on an environmental justice population because any adverse effects would be limited to construction activities, which would be temporary. The Project would have direct beneficial impacts, however, because it would provide full freeway-to-freeway access between Interstate Route 95 and Route 4, reduce interchange-related traffic congestion in surrounding communities, and improve commuter and freight networks, which would improve safety within the local community.

- Rhode Island and Environmental Justice Populations

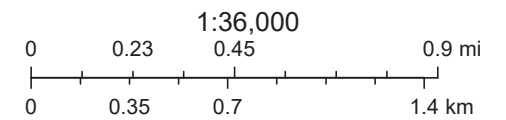
According to the RIDEM Environmental Resource Map, the Project Area is not located within an Environmental Justice (EJ) Zone. Therefore, enhanced outreach is not anticipated because there are no Environmental Justice abutters mapped within the Project Area.

I-95 and Rt 4 Interchange

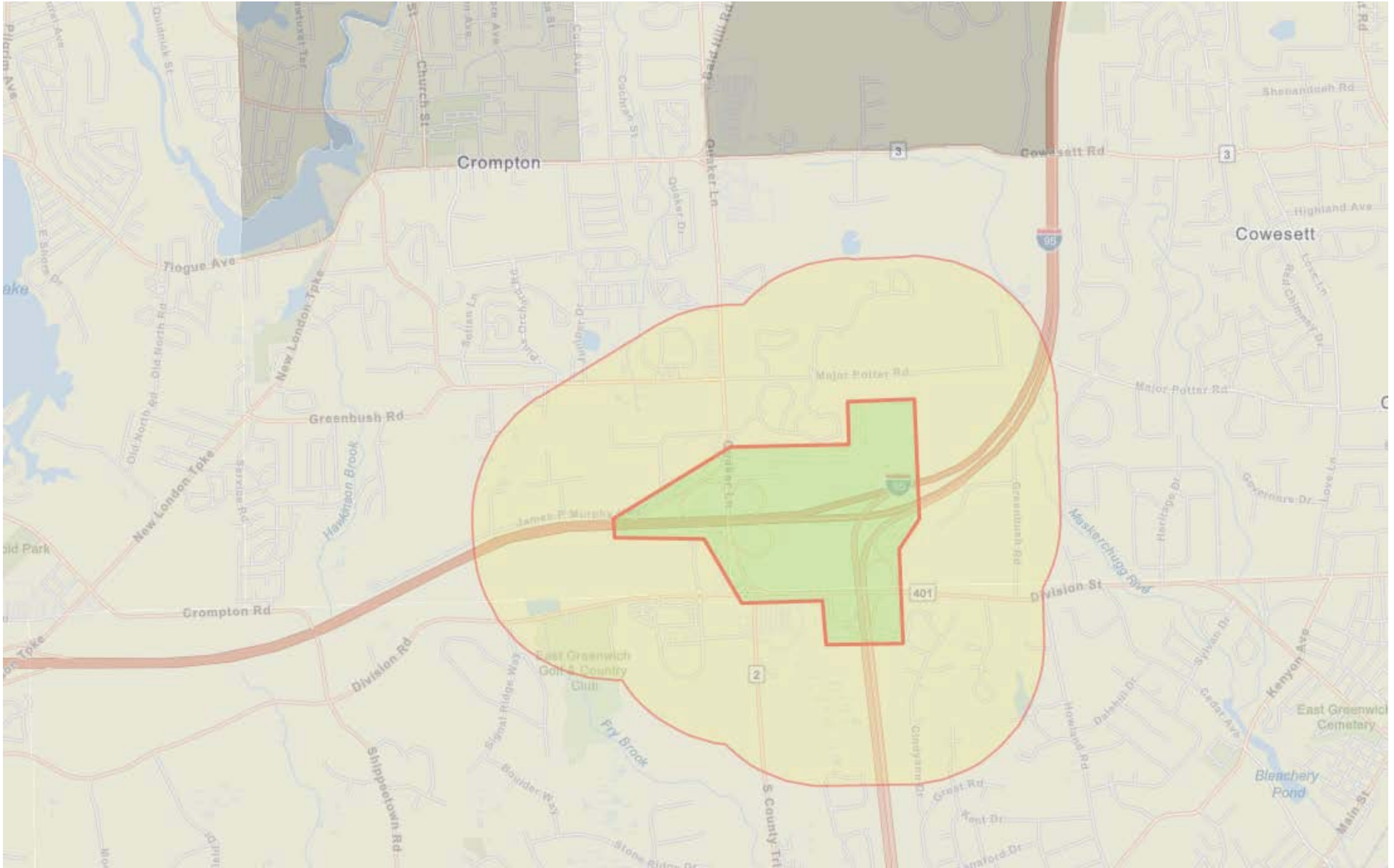


January 18, 2021

 I-95 and Route 4 Interchange

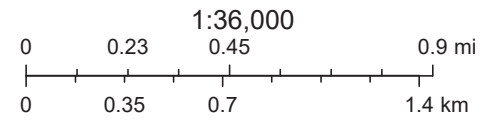
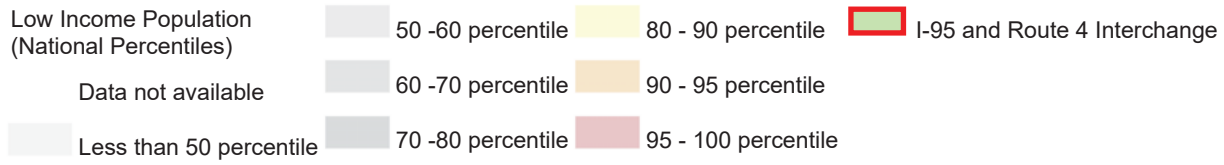


I-95 and Rt 4 Interchange_Low Income

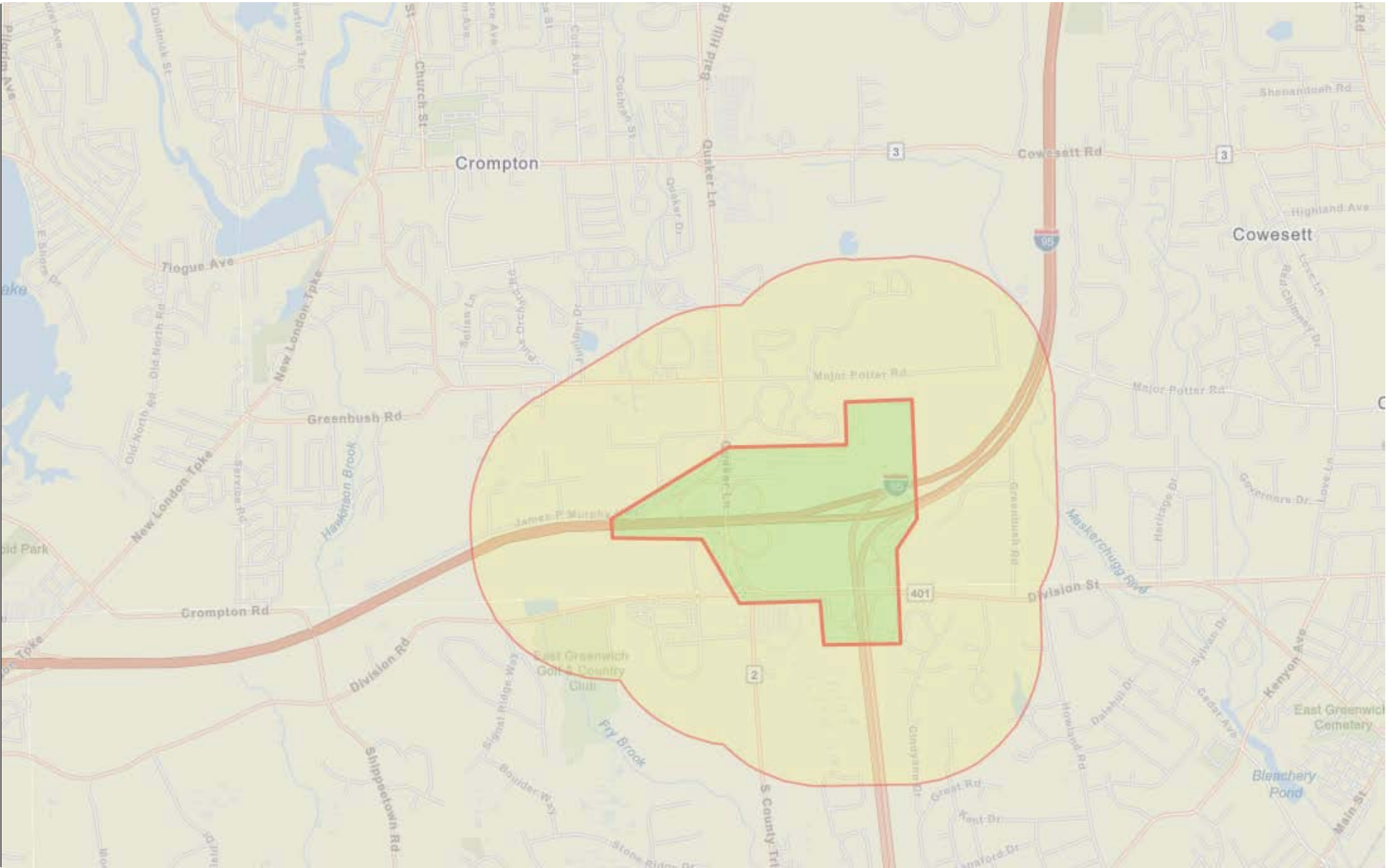


January 18, 2021

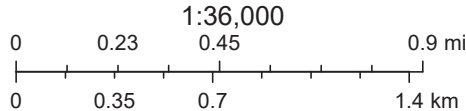
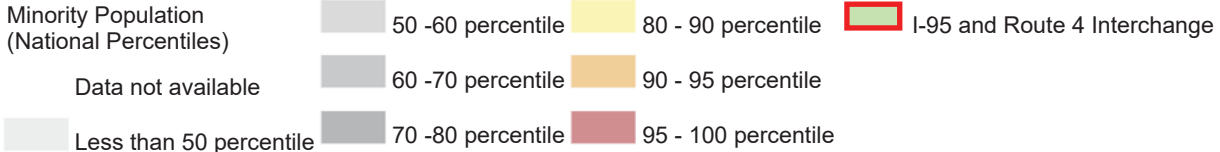
Low Income Population
(National Percentiles)



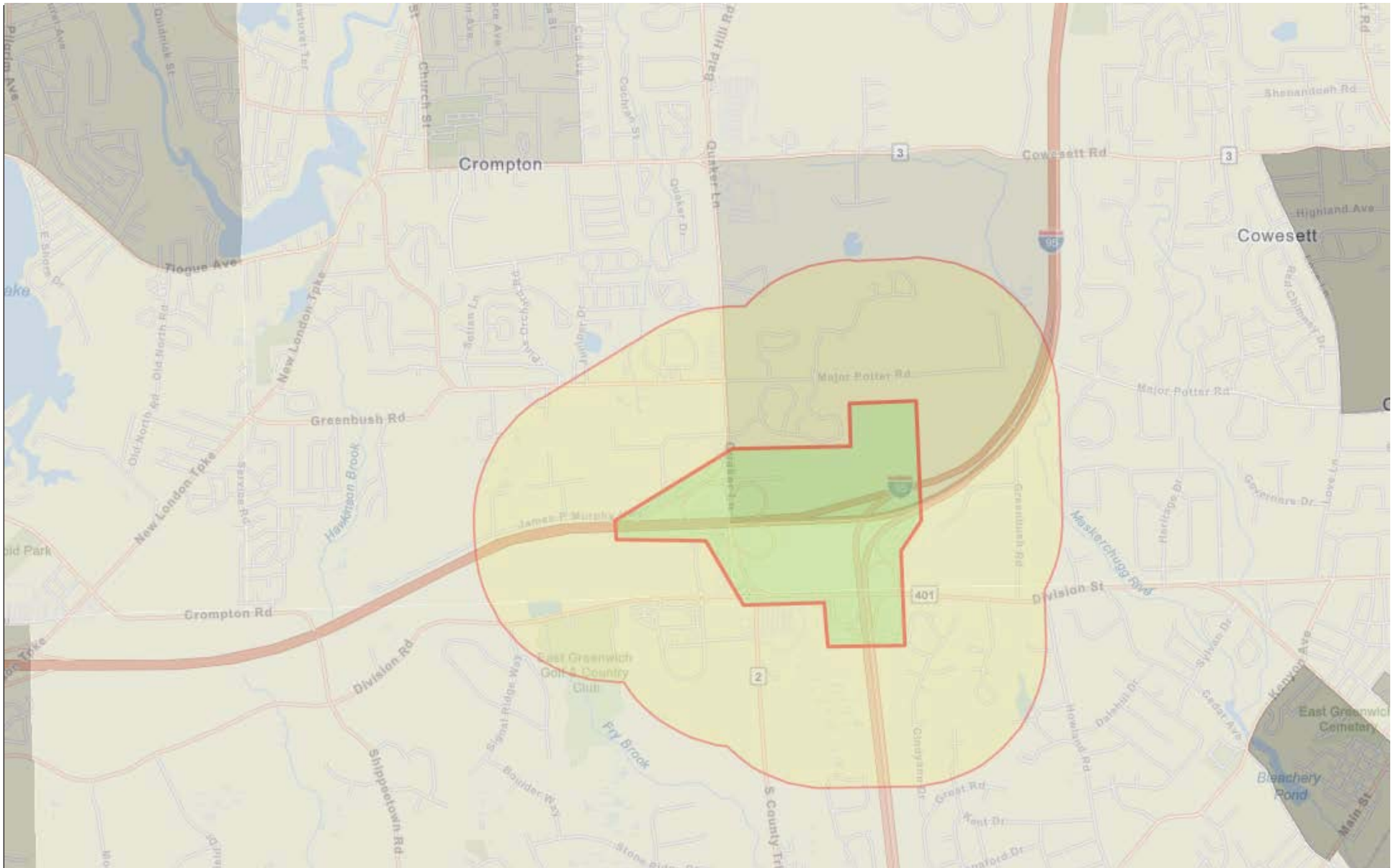
I-95 and Rt 4 Interchange_Minority



January 18, 2021



I-95 and Rt 4 Interchange_Linguistically Isolated



January 18, 2021

Linguistically Isolated
(National Percentiles)

